



US Army Corps of Engineers

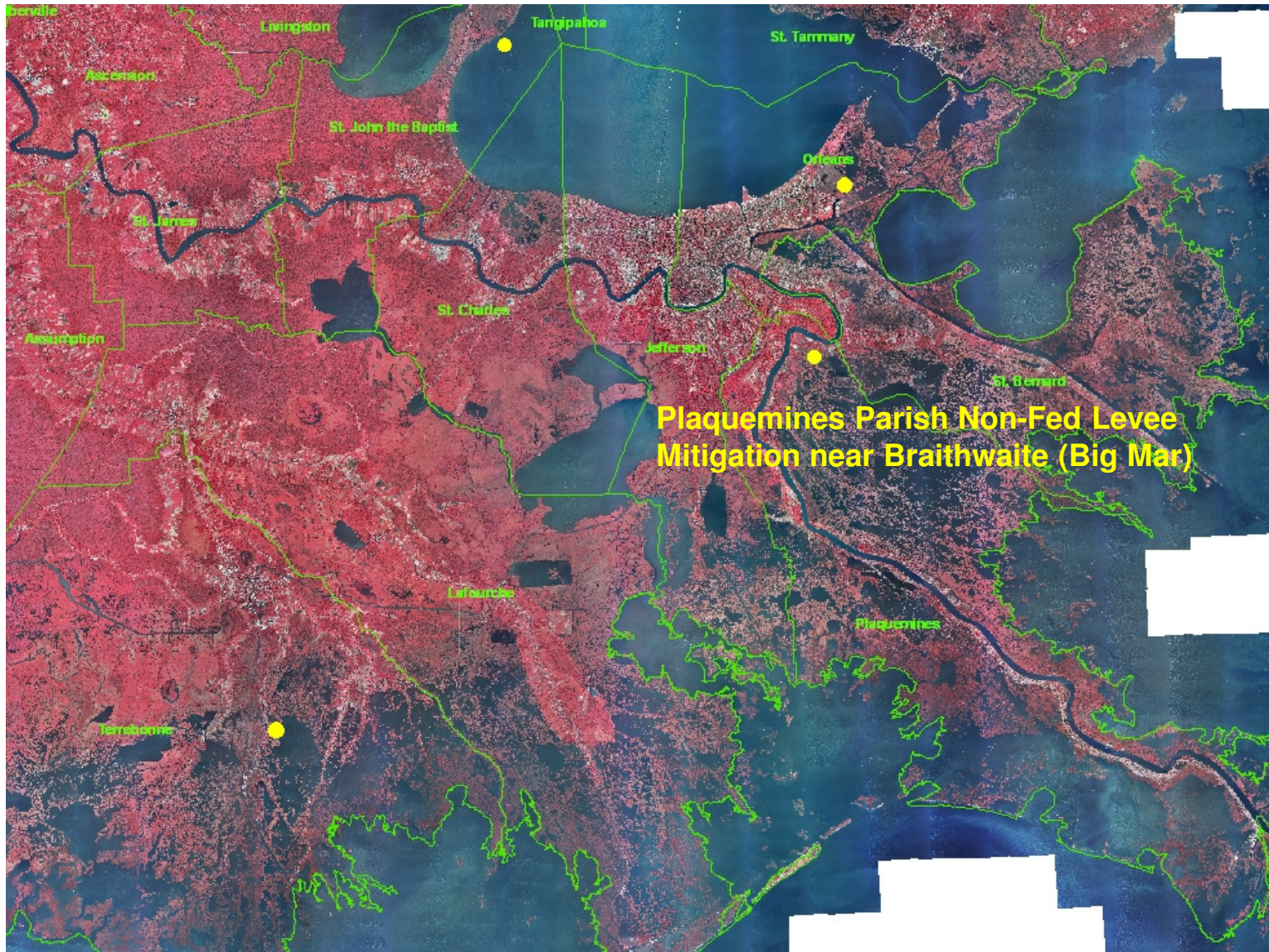


Plaquemines Parish Non-Federal Levee Mitigation (Braithwaite to Scarsdale)



Authority

- Public Law 109-148: Department of Defense, Emergency Supplemental Appropriations Act 2006
- Hurricane Katrina Environmental Assessment (2006) documented impacts





Project Components

- 21.3 acres of fresh/intermediate marsh impacted during NFL breach repair
- Create 24 acres of fresh/intermediate marsh
- Hydraulic dredge and fill
- Borrow source from Big Mar
- Approximately 150,000 cubic yards of dredged material needed



Status and Schedule

- Project planning delayed due to:
 - Original borrow site deemed unsuitable because of existing marsh vegetation
 - New borrow area identified and evaluated
 - NEPA document needed to evaluate the new borrow source not identified in Katrina EA



Status and Schedule

- NEPA Document Public Review November 17, 2010
- NEPA Document Approval December 17, 2010
- Draft PIR Completion* December 17, 2010
- Design Completion December 2010
- Construction Start September 2011**
- Construction Duration Approx. 3 Months

*PIR will be sent to MVD for approval after the EA is signed by the Commander

**Habitat constraints (rookery) may require work to take place only between September and January